

For the attention of Seend Parish Council

Copy to:

Roy While, Melksham Without South Cllr
Jonathon Seed, Summerham & Seend Cllr
John Watling, Head of Electoral Services
Paul Millard, Senior Rights of Way Warden for West Wiltshire
William Oulton, Democratic Services
Mike Mills, Chair of BRAG (Bowerhill Residents Action Group)

Dear Rosemary

Melksham Without Parish Council boundary with Seend Parish Council.

Further to our telephone conversation last week, please find details below of the Parish Boundary Review requested by Melksham Without Parish Council. This was discussed at the Community Governance Review meeting that Wiltshire Council held on Friday 12th December with Melksham Town and Melksham Without Parish Councils. At that meeting the Parish Council were asked if there were any other boundary reviews (other than the boundary with the Town) that they wished to be considered and the Council put forward the boundary with Seend Parish Council covering the area where BRAG (Bowerhill Residents Action Group) have established a picnic area on the bridleway from Locking Close to the K&A Canal.

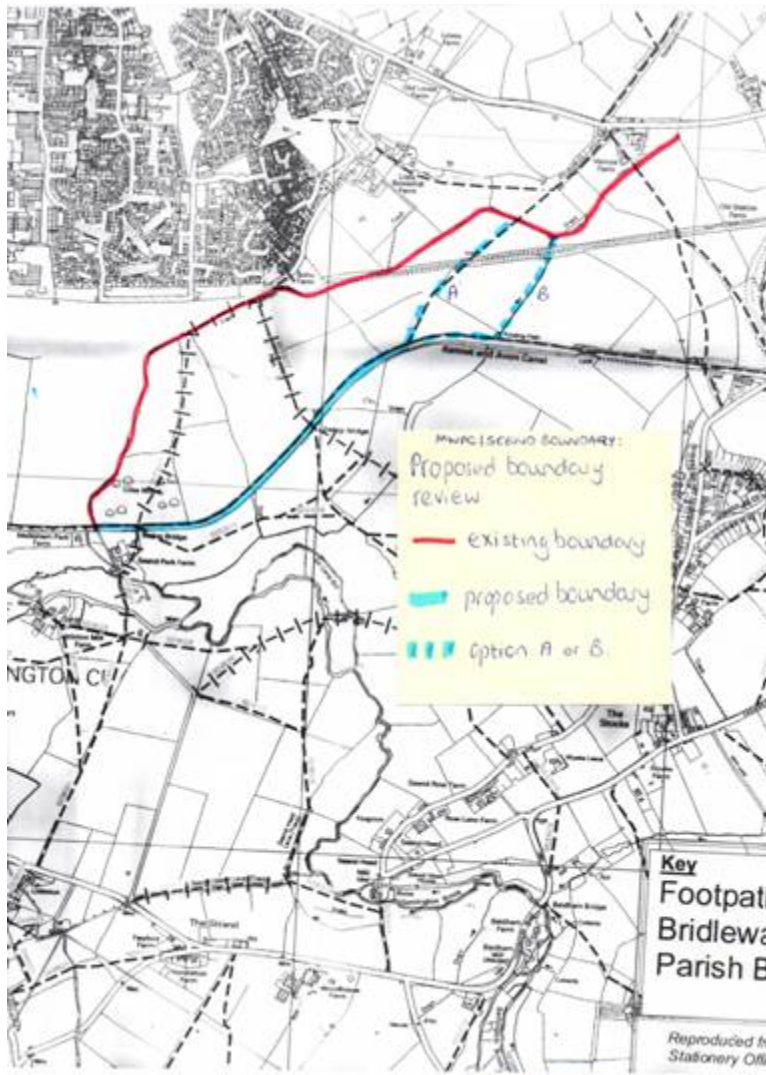
Melksham Without Parish Council proposed that the boundary between Melksham Without and Seend Council becomes the Kennet & Avon Canal as currently the boundary extends over the Canal into the land south of Bowerhill including the land that BRAG (Bowerhill Residents Action Group) have established a picnic area, enhanced the bridleway with tree planting, erected benches and a noticeboard. All assets have been donated by BRAG to Melksham Without Parish Council which they insure and maintain, in particular the "oil drum" bin which is emptied weekly by the Melksham Without Parish Council caretaker.

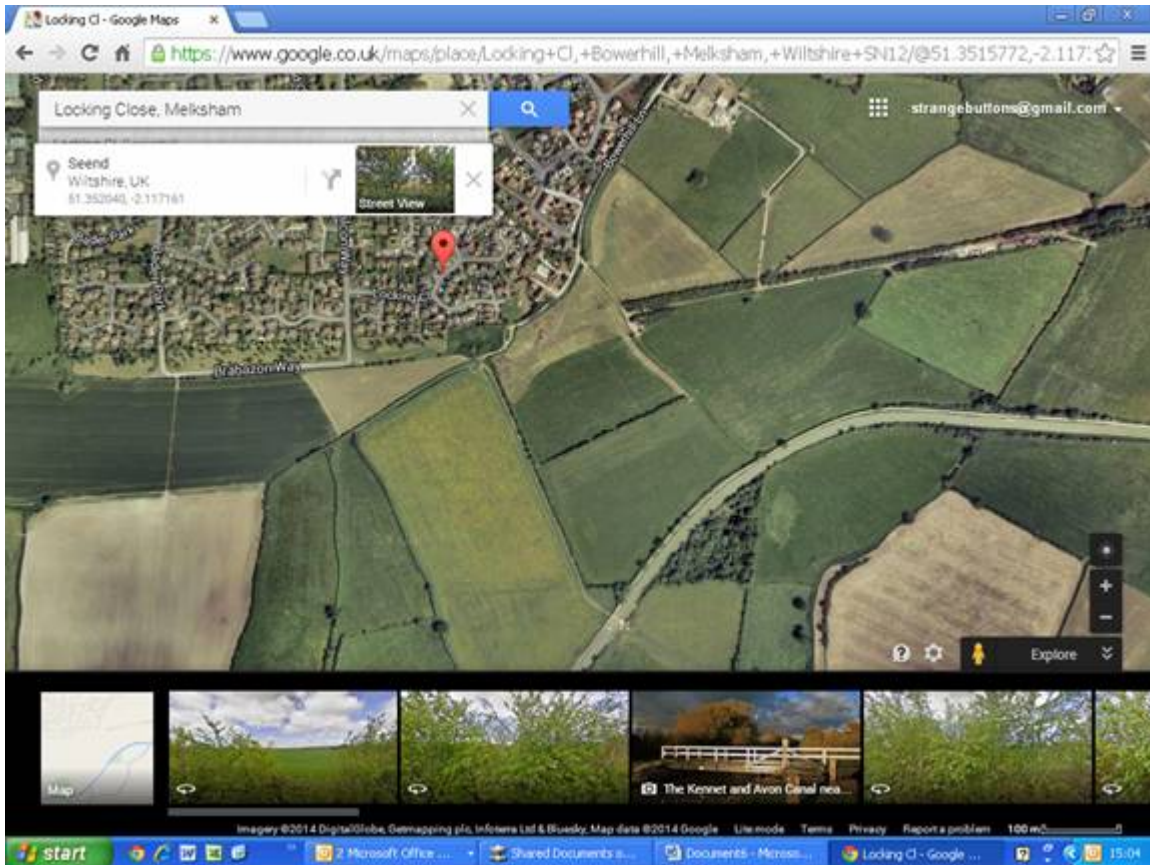
Melksham Without Parish Council suggest that option B is the preferred option for joining back up to the existing boundary as it follows an established field line with a hedgerow, whereas option A crosses an open field (both A & B follow existing Rights of Ways). *See map below.*

The land has several Rights of Ways within it, and these presumably would need to be renumbered from the Seend series to the MW series. The BR S17 would then be MW45 all the way to the canal, the section of S13 between the railway and the canal would need a new number, finally S18 would become a continuation of MW36. The section of canal towpath along the revised boundary would be MW16 instead of S52 over that length. (Due to these changes I have copied Paul Millard, Rights of Way Officer for West Wiltshire into the email for his information).

It is noted that no residential properties are affected.

Please note that BRAG have recently installed a series of benches in Bowerhill in the Melksham Without parish, and two benches – one either side of the brideway exit onto the canal footpath - in the parish of Seend.





I hope that this boundary review meets with the approval of Seend Parish Council and that you could let us know the view of Seend Parish Council in due course.

With best wishes for Christmas and the New Year from all at Melksham Without.
Regards, Teresa

Teresa Strange
Clerk
Melksham Without Parish Council
First Floor
Crown Chambers
7 Market Place
Melksham
Wiltshire
SN12 6ES
01225 705700
clerk@melkshamwithout.co.uk
www.melkshamwithout.co.uk